

RAPPORTO ATTIVITA' SOLARE

GENNAIO 2012

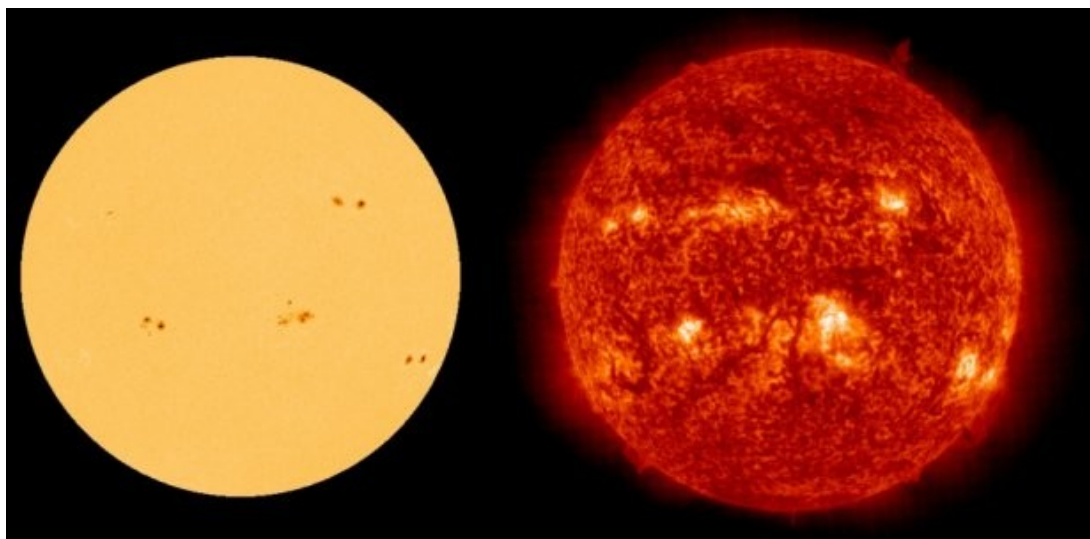
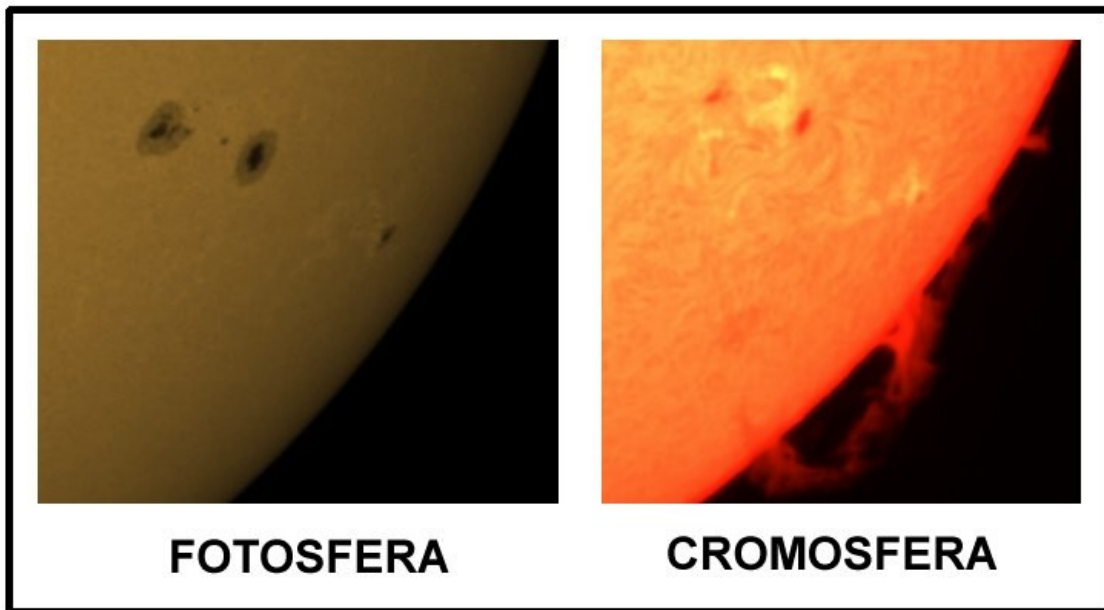
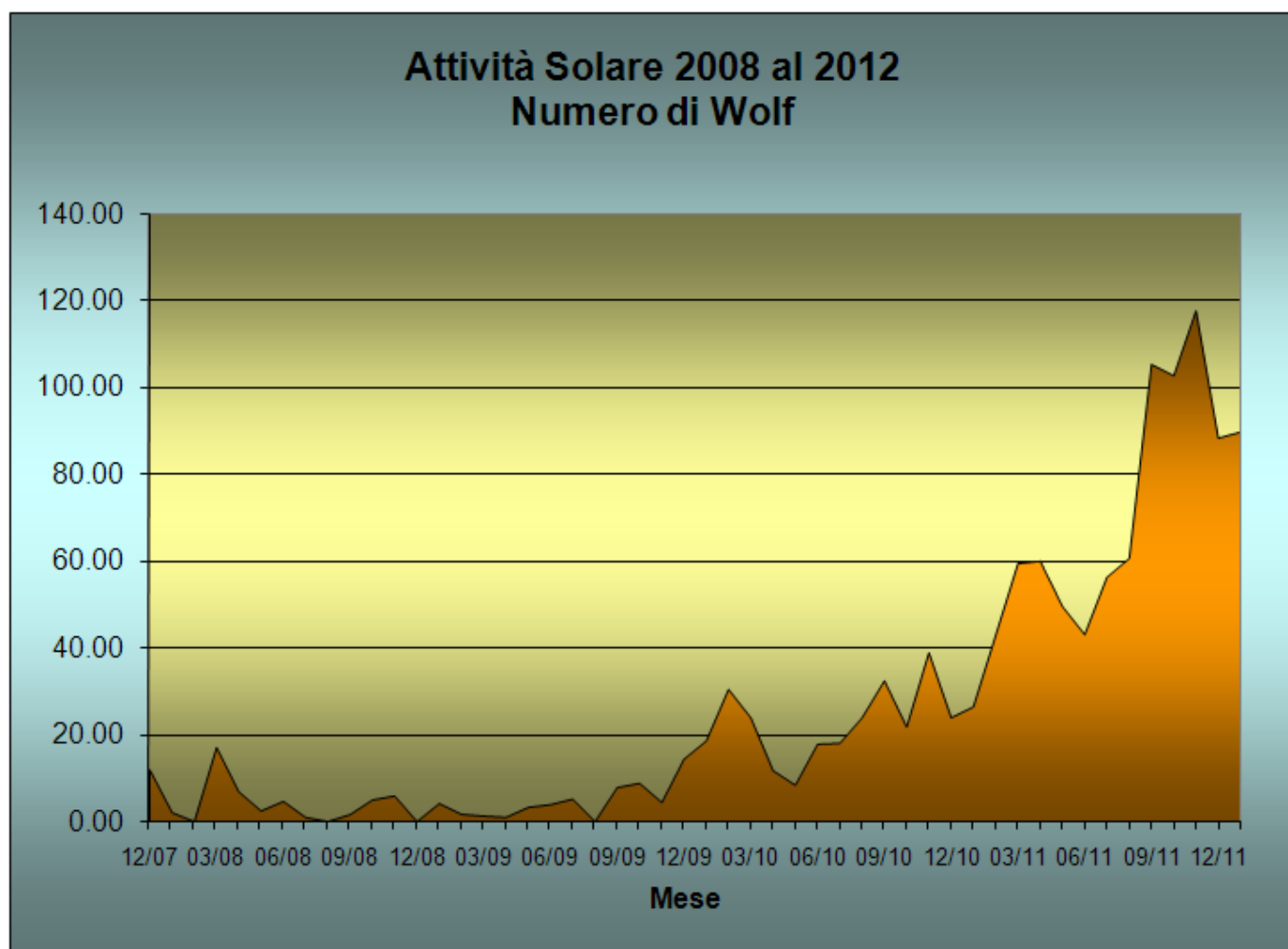


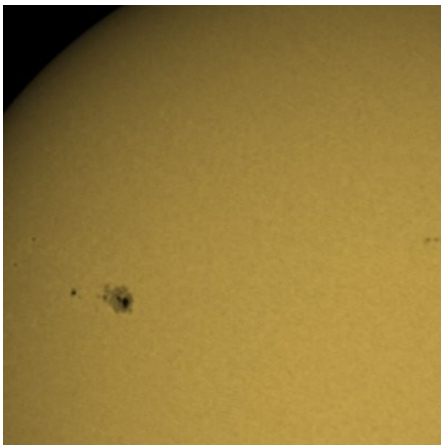
TABELLA DEL NUMERO DI WOLF DELLE NOSTRE OSSERVAZIONI

Mese	2007	2008	2009	2010	2011	2012
Gennaio	-	2,08	4,17	18,64	26,50	90,00
Febbraio	-	0,00	1,70	30,54	43,00	
Marzo	-	17,14	1,28	24,00	59,63	
Aprile	-	6,90	1,00	11,76	60,19	
Maggio	-	2,48	3,30	8,43	49,69	
Giugno	-	4,67	3,92	17,90	43,20	
Luglio	-	0,96	5,22	18,10	56,46	
Agosto	-	0,00	0,00	24,00	60,82	
Settembre	-	1,65	7,88	32,54	105,63	
Ottobre	-	5,00	8,85	21,86	103,00	
Novembre	-	5,93	4,44	39,00	118,00	
Dicembre	12,00	0,00	14,46	24,00	88,60	

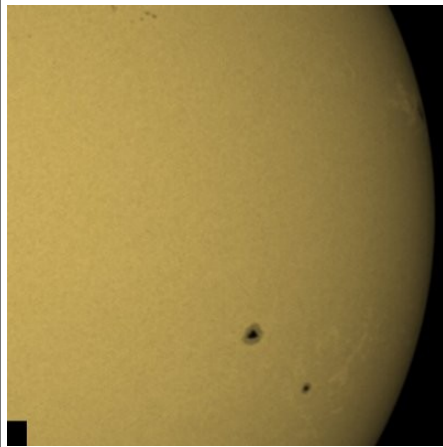
GRAFICO DEL NUMERO DI WOLF DELLE NOSTRE OSSERVAZIONI

Numero Wolf = (10 x gruppi) + numero macchie

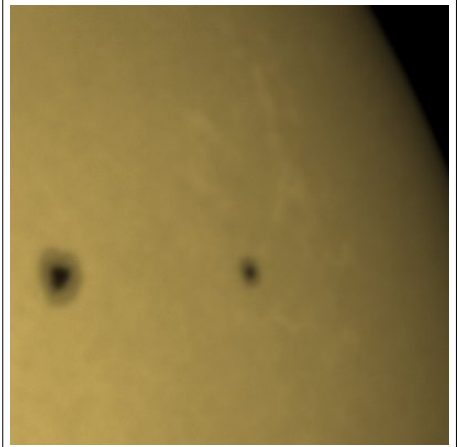




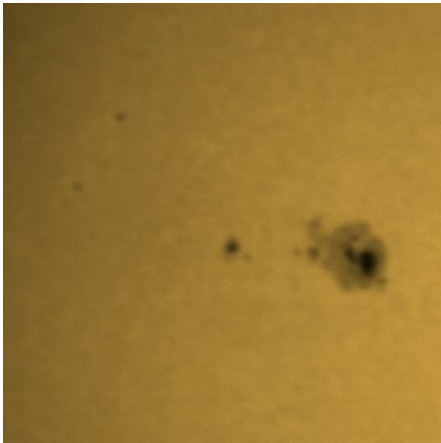
06/01/2012



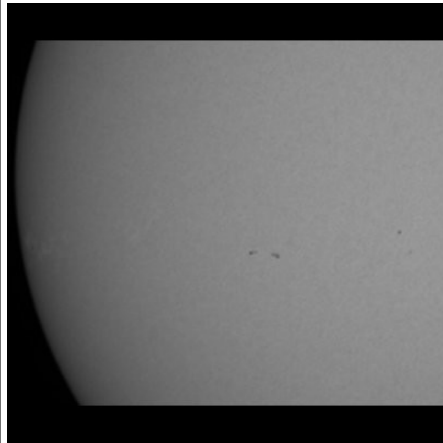
06/01/2012



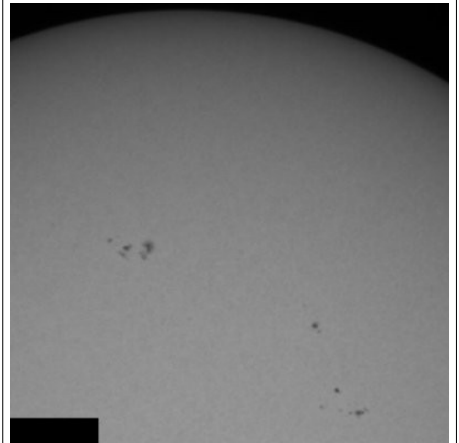
06/01/2012



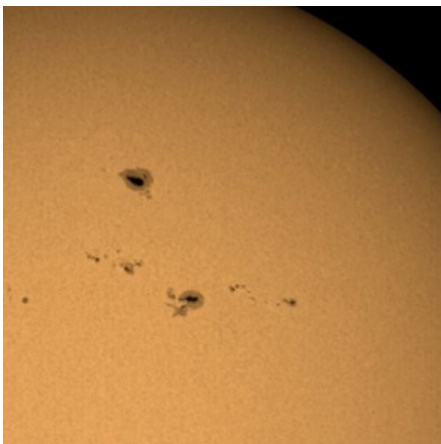
06/01/2012



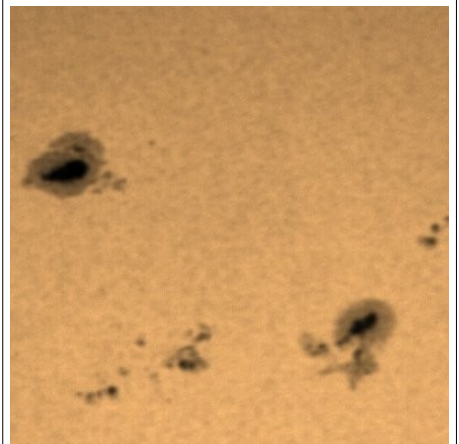
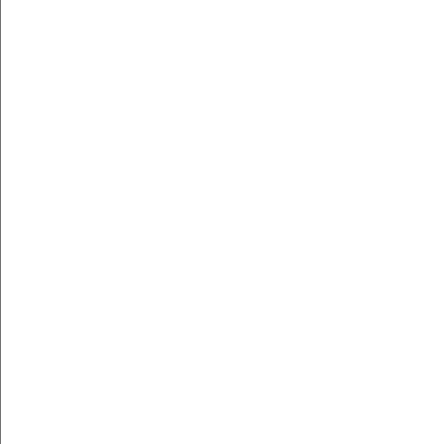
14/01/2012



14/01/2012



21/01/2012



02/08/2011

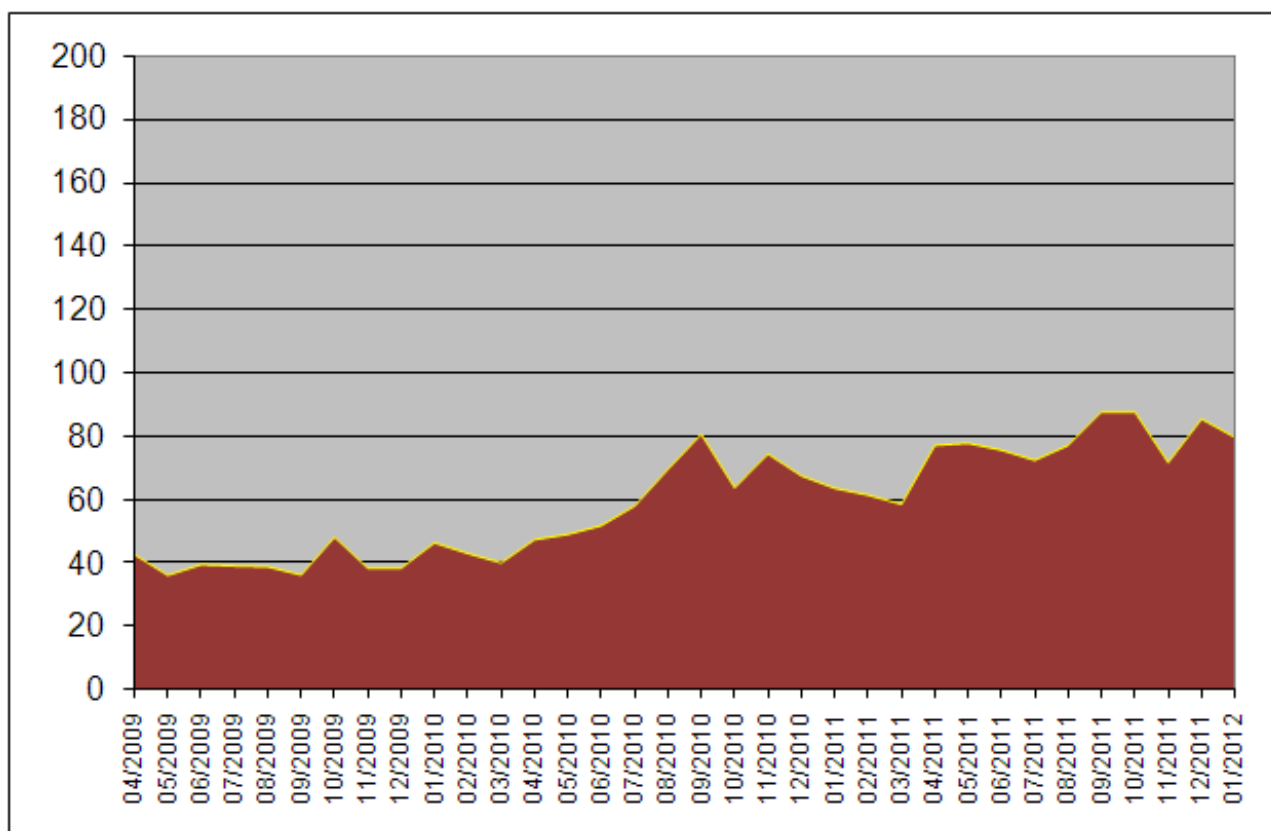
OSSERVAZIONE MENSILE IN LUCE H-alfa (6563Å)

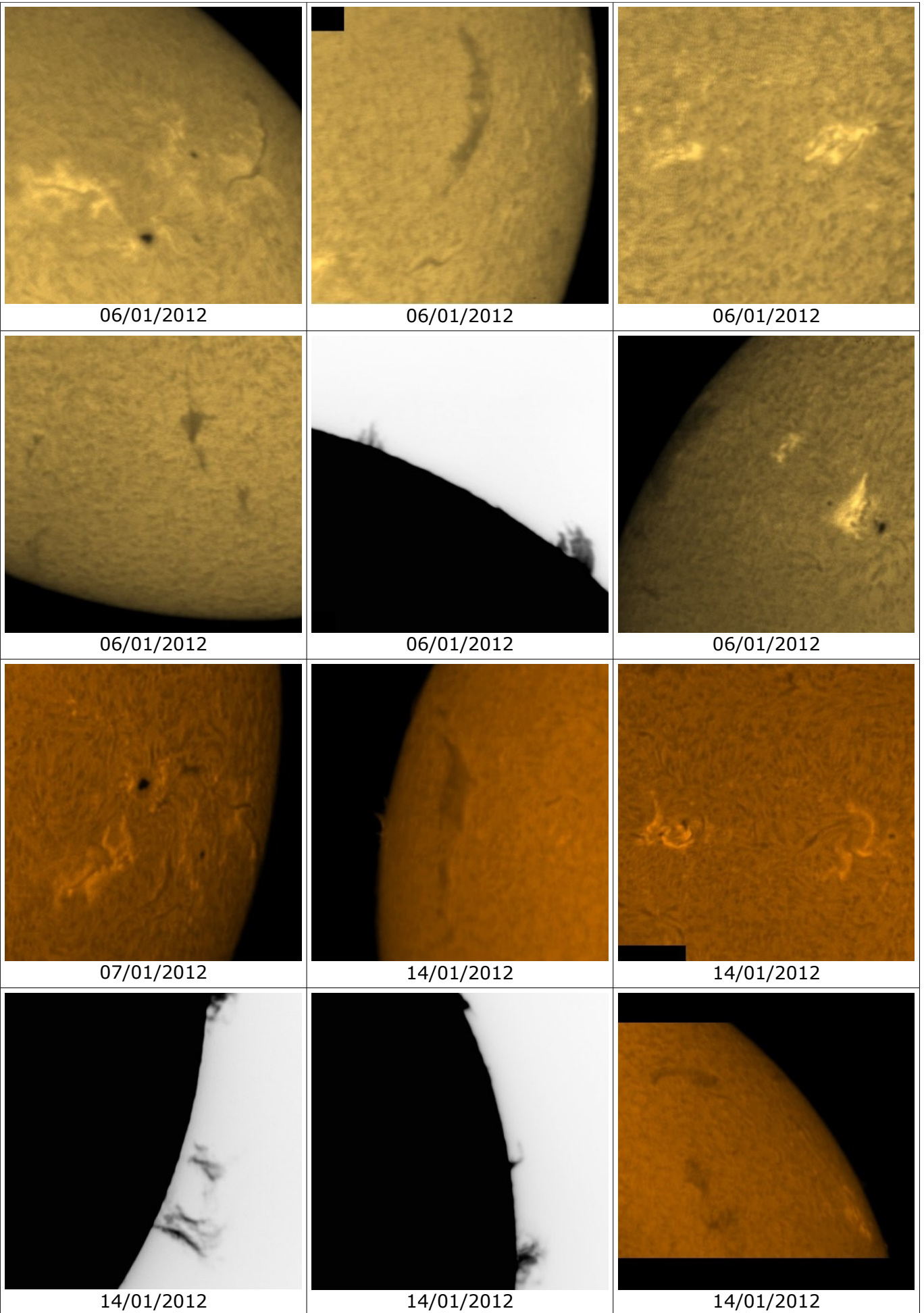
TABELLA DELLE PROTUBERANZE AL LEMBO (Rp totale)

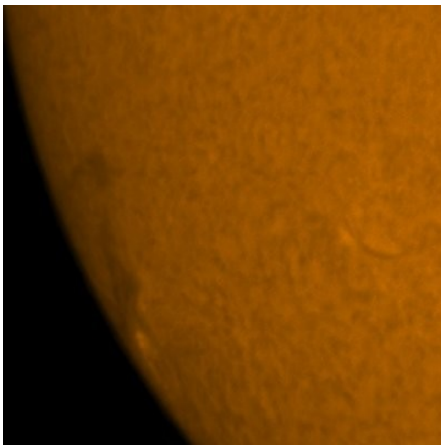
MESE	2009	2010	2011	2012
Gennaio		46,9	64,2	80,3
Febbraio		43,5	62,0	
Marzo		40,6	59,1	
Aprile	43,2	47,9	77,7	
Maggio	36,7	49,6	78,4	
Giugno	40,0	52,4	76,2	
Luglio	39,6	58,0	73,0	
Agosto	39,3	70,2	77,7	
Settembre	36,8	81,2	88,3	
Ottobre	48,7	64,3	88,3	
Novembre	38,9	75,0	72,3	
Dicembre	38,9	68,1	86,0	

GRAFICO

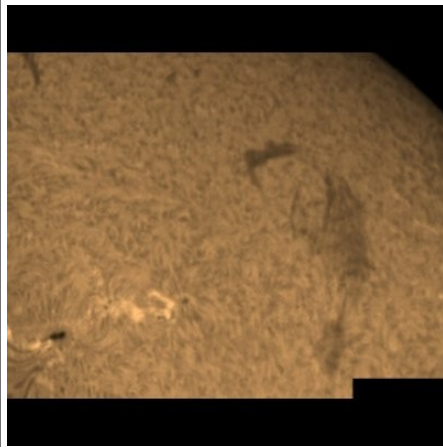
Rp totale = (10 x nucleo di protuberanze) + struttura individuale



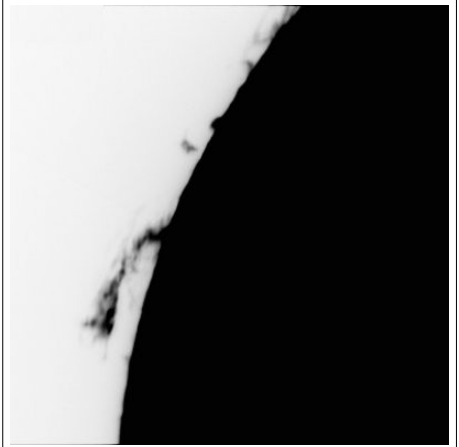




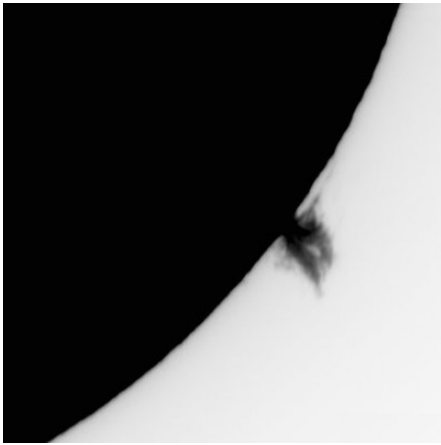
14/01/2012



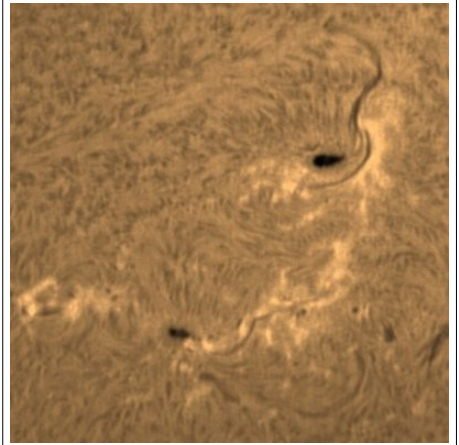
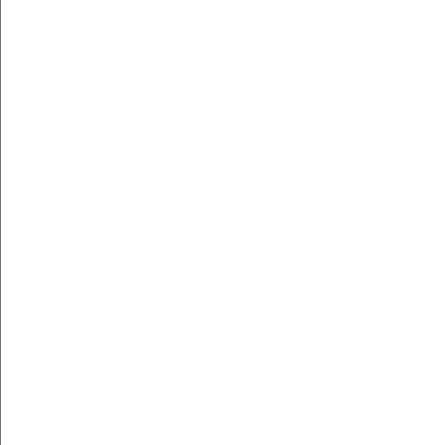
21/01/2012



21/01/2012



21/01/2012



21/01/2012

Fabio Mariuzza

Circolo ASTrofilii Talmassons (CAST) www.castfvg.it
Maggiori informazione: www.friulinelweb.it/sole.htm